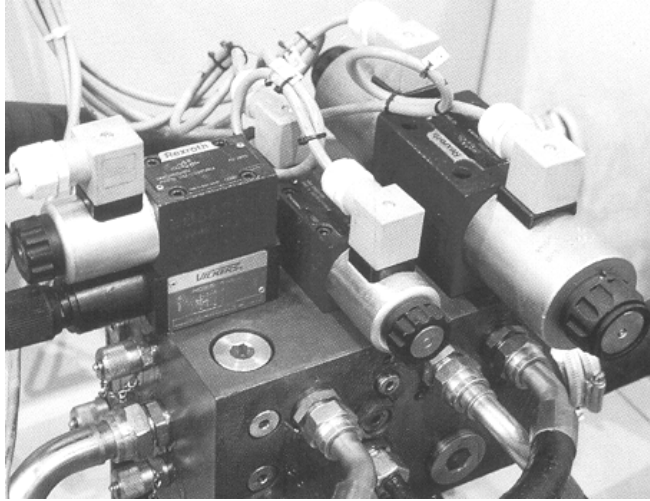


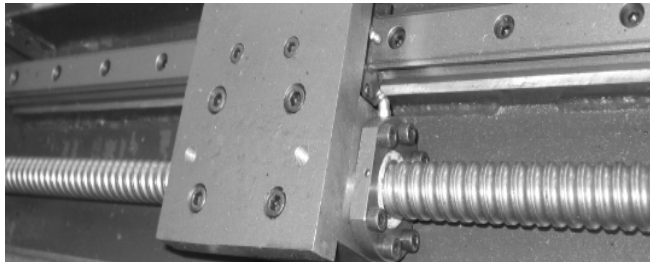
QC11K CNC Hydraulic Guillotine Shearing Machine

- adopt the main structure of the QC11Y Hydraulic Guillotine Shearing Machine,
- three-points rollers guide
- BOSCH-REXROTH hydraulic system
- shearing angle, blade clearance, back gauge and stroke CNC control (optional)
- back gauge driven by servo motor, ball screw and linear guide
- DELME DAC-310 or DAC-360 control system



Bosch-Rexroth hydraulic system

BOSCH-REXROTH hydraulic system



Ball screw and linear guide

back gauge driven by servo motor, ball screw and linear guide



DAC-310 Controller, DELEM(optional)

The DAC-310 shear controller provides a complete and compact shear control application. Including back gauge control, gap control and stroke length limitation this state of the art electronics based unit makes a versatile solution.

The back gauge can be moved manually by selecting pushbuttons in 2 different speeds.

With its bright LCD display, the control offers a clear, fast and simple programming facility.

The DAC-310 offers you the following features:

- Back gauge control
- Bright LCD display, 128x64 pixels
- Gap or Angle control
- Stroke length limitation
- Actual and programmed position visualization
- Dialogue language is selectable
- Stock counter
- Programmable up to 100 steps
- Programming functions:
 - User-friendly one-touch programming
 - Axis position
 - Positioning correction
 - Chaining
 - Retract
 - Function outputs
 - Step repetition



DAC-360 Controller, DELEM(optional)

The DAC-360 provides a complete solution for shearing machines. In addition to the X axis position it offers automatic control of cutting angle, stroke length and gap.

The numerical programming is user-friendly and guides the operator through the programming possibilities.

The DAC-360 offers you the following additional features:

- Panel based housing
- Bright LCD screen
- Back gauge control
- Retract function
- Cutting angle control
- Cutting gap control
- Stroke length limitation
- Force control
- Manual movement of axes
- Force control
- Dialogue language is selectable
- Programming functions
 - Numerical program setup
 - Back gauge position
 - Retract function
 - Angle programming
 - Gap programming
 - Stroke length
 - Step repetition

Gape value	Material types
Stroke limitation	Thickness
Product counter	Stock counter
Inch/mm selection	Sheet position
	Axis speed
	Mm/inch selection

This information supplied by DELEM, more information please check www.delem.com



Sheet support system, all optional, need to be special book, cost supply.

NO	Model	Strokes n/min	Back Gauge mm	Shearing Angle mm	Main Power KW	Dimension L×W×H
1	QC11K-6×2500	16-35	20-600	0.5°-2.5°	7.5	3150×1650×1700
2	QC11K-6×3200	14-35	20-600	0.5°-2.5°	7.5	3860×1810×1750
3	QC11K-6×4000	10-30	20-600	0.5°-2.5°	7.5	4630×2030×1940
4	QC11K-6×5000	10-30	20-800	0.5°-2.5°	11	5660×2050×1950
5	QC11K-6×6000	8-25	20-800	0.5°-2.5°	11	6680×2200×2500
6	QC11K-8×2500	14-30	20-600	0.5°-2.5°	11	3170×1700×1700
7	QC11K-8×3200	12-30	20-600	0.5°-2.5°	11	3870×1810×1780
8	QC11K-8×4000	10-25	20-600	0.5°-2.5°	11	4680×1900×1860

9	QC11K-8×5000	10-25	20-800	0.5°-2.5°	15	5680×2250×2200
10	QC11K-8×6000	8-20	20-800	0.5°-2.5°	15	6800×2350×2700
11	QC11K-12×2500	10-25	20-800	0.5°-2.5°	15	3270×1730×1800
12	QC11K-12×3200	9-25	20-800	0.5°-2.5°	15	3990×2250×2200
13	QC11K-12×4000	6-20	20-800	0.5°-2.5°	15	4720×2490×2500
14	QC11K-12×5000	7-20	20-1000	0.5°-2.5°	22	5720×2600×2800
15	QC11K-12×6000	6-20	20-1000	0.5°-2.5°	30	6720×2500×2550
16	QC11K-12×7000	6-20	20-1000	0.5°-2.5°	37	7800×2600×3200
17	QC11K-12×8000	6-20	20-1000	0.5°-2.5°	45	9100×2800×3400
18	QC11K-12×10000	4-18	20-1000	0.5°-2.5°	55	11100×3200×3900
19	QC11K-12×12000	4-18	20-1000	0.5°-2°	2×37	13200×3950×4800
20	QC11K-16×2500	9-20	20-800	0.5°-2.5°	22	3320×2100×2200
21	QC11K-16×3200	8-20	20-800	0.5°-2.5°	22	3900×1960×2300
22	QC11K-16×4000	8-15	20-800	0.5°-2.5°	22	4760×1900×2560
23	QC11K-16×5000	7-15	20-1000	0.5°-2.5°	30	5760×2200×2750
24	QC11K-16×6000	6-15	20-1000	0.5°-2.5°	37	6780×2450×3070
25	QC11K-16×8000	5-15	20-1000	0.5°-2.5°	55	9120×3000×3800
26	QC11K-16×10000	4-15	20-1000	0.5°-2.5°	2×37	11200×3400×4000
27	QC11K-16×12000	3-12	20-1000	0.5°-2°	2×45	13300×4300×5800
28	QC11K-20×2500	7-20	20-1000	0.5°-3°	30	3300×1900×2510
29	QC11K-20×3200	6-20	20-1000	0.5°-3°	30	4000×2000×2650
30	QC11K-20×4000	5-15	20-1000	0.5°-3°	30	4800×2150×2940
31	QC11K-20×5000	4-15	20-1000	0.5°-3°	55	5860×2400×3150
32	QC11K-20×6000	4-15	20-1000	1.5°-3°	55	6100×2650×3375
33	QC11K-20×8000	4-15	20-1000	1.5°-2.5°	2×37	9120×3400×3800
34	QC11K-20×10000	4-14	20-1000	1.5°-2.5°	2×45	11200×4300×5800
35	QC11K-20×12000	3-12	20-1000	1.5°-2.5°	2×55	13380×4500×6100
36	QC11K-25×2500	6-15	20-1000	1.5°-3.5°	37	3300×2000×2650
37	QC11K-25×3200	5-15	20-1000	1.5°-3.5°	37	3970×2100×2865
38	QC11K-25×4000	4-12	20-1000	1.5°-3.5°	45	4780×2500×3150
39	QC11K-25×5000	4-12	20-1000	1.5°-3.5°	55	6100×2880×3550
40	QC11K-25×6000	3-12	20-1000	2°-3°	55	7200×3000×3850
41	QC11K-25×8000	3-12	20-1000	1.5°-3°	2×37	9300×3500×4300
42	QC11K-32×2500	4-12	20-1000	2°-3.5°	55	3500×2300×3200
43	QC11K-32×3200	4-12	20-1000	2°-3.5°	55	4380×2600×3450
44	QC11K-32×4000	3-12	20-1000	2°-3.5°	55	5300×3000×3600
45	QC11K-32×6000	3-12	20-1000	2°-3°	2×37	7300×3800×4200
46	QC11K-40×2500	4-10	20-1000	2°-4°	55	3900×2550×3500
47	QC11K-40×3200	3-10	20-1000	2°-4°	55	4600×2900×3750
48	QC11K-40×4000	3-10	20-1000	2°-3.5°	2×45	5380×3300×4000
49	QC11K-50×2500	3-10	20-1000	2°-4°	2×55	4000×3300×4200
50	QC11K-50×3200	3-10	20-1000	2°-4°	3×90	4700×3600×4500
51	QC11K-60×3200	2-8	20-1000	2°-4°	4×90	4900×3800×4900

